



# The Sharqiya Sands

**Royal  
Geographical  
Society**

with IBG

---

Advancing geography  
and geographical learning



**Life in Sharqiya**



# Life in Sharqiya

**Royal  
Geographical  
Society**

with IBG

Advancing geography  
and geographical learning

## Objectives:

**To understand how different species, including human beings, have adapted to life in the Sharqiya Sands region.**

**To know the challenges different species face in the Omani desert.**

**To be able to design an ultimate Sharqiya Sands species which is adapted to the region's environment**



# Life in Sharqiya

**Royal  
Geographical  
Society**

with IBG

Advancing geography  
and geographical learning

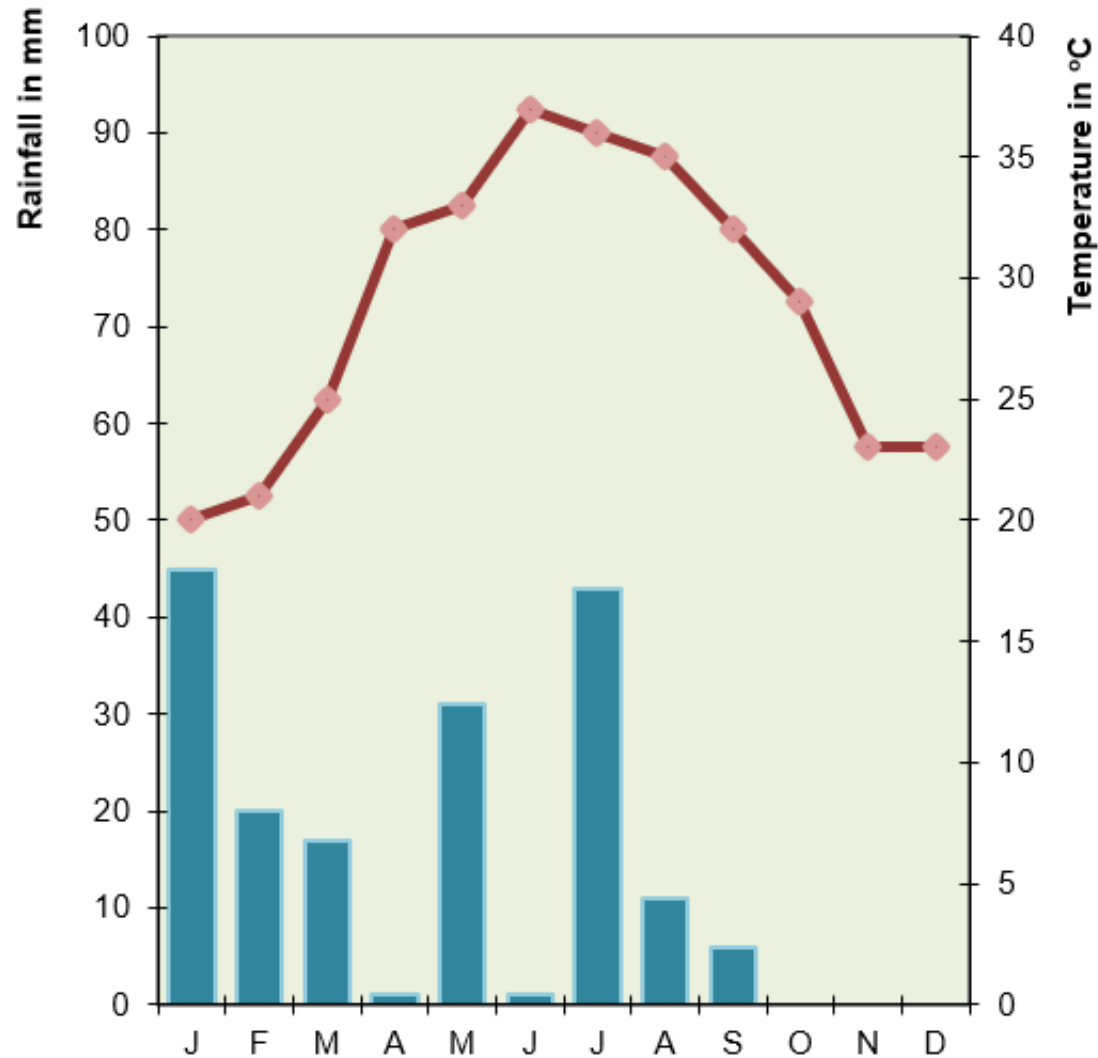
**Walk around the gallery set up around the room.**

**From the images, try to find a set of challenges that make life difficult in the Omani desert for different species. Note these challenges down in rough.**

# Desert Environment Gallery

**Royal  
Geographical  
Society**  
with IBG

Advancing geography  
and geographical learning



# Desert Environment Gallery

**Royal  
Geographical  
Society**  
with IBG

Advancing geography  
and geographical learning

Source: fawaz albalagy (CC-BY-2.0)





# Desert Environment Gallery

**Royal  
Geographical  
Society**  
with IBG

Advancing geography  
and geographical learning

Source: gordonfour (CC-BY-2.0)





# Desert Environment Gallery

**Royal  
Geographical  
Society**  
with IBG

Advancing geography  
and geographical learning



Source: brandjamie (CC-BY-2.0)



# Desert Environment Gallery

**Royal  
Geographical  
Society**  
with IBG

Advancing geography  
and geographical learning



Source: Andries3 (CC-BY-2.0)



# Desert Environment Gallery

**Royal  
Geographical  
Society**  
with IBG

Advancing geography  
and geographical learning



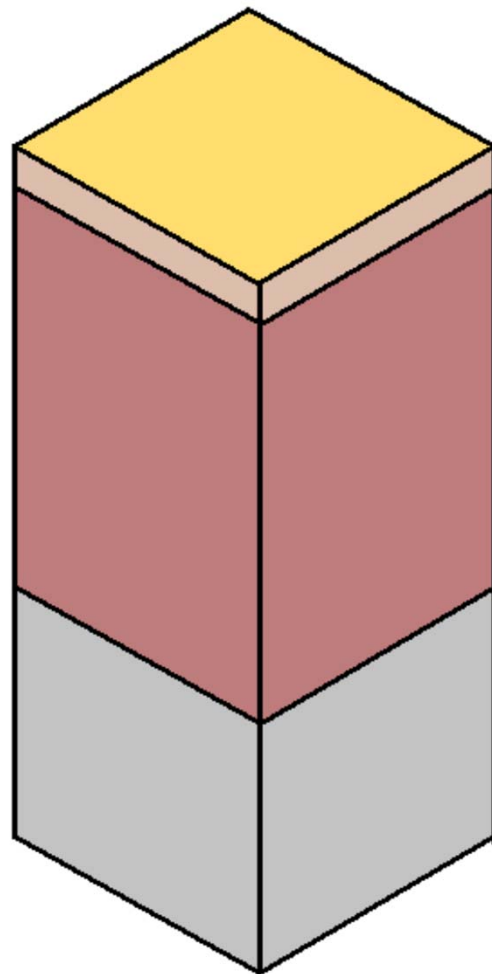
Source: Sonse (CC-BY-2.0)



# Desert Environment Gallery

**Royal  
Geographical  
Society**  
with IBG

Advancing geography  
and geographical learning



## Desert soil profile

-  Surface layer
-  Topsoil
-  Subsoil
-  Parent material



# Desert Environment Gallery

**Royal  
Geographical  
Society**  
with IBG

Advancing geography  
and geographical learning



**NaCl**

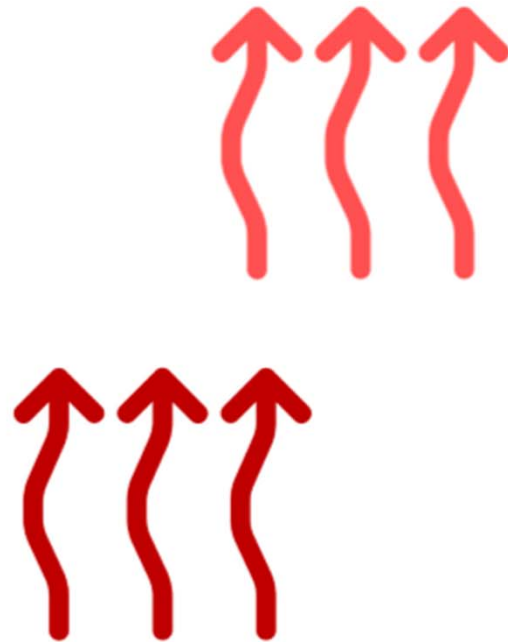
Source: Kai Schreiber (CC-BY-2.0)



# Desert Environment Gallery

**Royal  
Geographical  
Society**  
with IBG

Advancing geography  
and geographical learning





# Life in Sharqiya

**Royal  
Geographical  
Society**

with IBG

Advancing geography  
and geographical learning

**The Sharqiya Sands region has some interesting plants and animals that have adapted to the challenges they face there.**

**Choose whether to study a plant or an animal and then collect the necessary resources.**



# Life in Sharqiya

**Royal  
Geographical  
Society**

with IBG

Advancing geography  
and geographical learning

**Firstly, match the description of a species' feature to an explanation of why it has that feature.**

**Then annotate your picture sheet with those features. You might like to use one colour for the description and a different colour for the explanation.**



# Life in Sharqiya

**Royal  
Geographical  
Society**

with IBG

Advancing geography  
and geographical learning

**What features are common to both the Ruppell's Fox and the Prosopis tree?**

**Think about the features you would design in an ultimate Sharqiya species. Draw your species and annotate it with your ideas.**

**Make sure you link each feature to one of the challenges that species face in the Sharqiya Sands.**



# Life in Sharqiya

**Royal  
Geographical  
Society**

with IBG

Advancing geography  
and geographical learning

**Study the picture you have been given connected to the Wahiba Bedouin people. Think about what it shows.**

**Then look at the questions on your sheet – what answers might you now be able to provide.**



# Wahiba Bedouin People

**Royal  
Geographical  
Society**  
with IBG

Advancing geography  
and geographical learning



# Wahiba Bedouin People

**Royal  
Geographical  
Society**  
with IBG

Advancing geography  
and geographical learning



Source: Joseph Carr (CC-BY-2.0)

# Wahiba Bedouin People

**Royal  
Geographical  
Society**  
with IBG

Advancing geography  
and geographical learning



# Wahiba Bedouin People

**Royal  
Geographical  
Society**  
with IBG

Advancing geography  
and geographical learning



# Wahiba Bedouin People

**Royal  
Geographical  
Society**  
with IBG

Advancing geography  
and geographical learning



Source: Joseph Carr (CC-BY-2.0)

# Wahiba Bedouin People

**Royal  
Geographical  
Society**  
with IBG

Advancing geography  
and geographical learning



Source: Alia Z. Waggat (CC BY-NC-ND)

# Wahiba Bedouin People

**Royal  
Geographical  
Society**  
with IBG

Advancing geography  
and geographical learning



Source: Tanenhaus (CC-BY-2.0)

# Wahiba Bedouin People

**Royal  
Geographical  
Society**  
with IBG

Advancing geography  
and geographical learning



Source: Bart (CC-BY-2.0)



# Wahiba Bedouin People

**Royal  
Geographical  
Society**  
with IBG

Advancing geography  
and geographical learning



Source: Sankara Subramanian (CC-BY-2.0)

# Wahiba Bedouin People

**Royal  
Geographical  
Society**  
with IBG

Advancing geography  
and geographical learning



Source: Marc Veraart (CC-BY-2.0)

# Wahiba Bedouin People

**Royal  
Geographical  
Society**  
with IBG

Advancing geography  
and geographical learning



Source: Robert Haandrikman (CC-BY-2.0)

# Wahiba Bedouin People

**Royal  
Geographical  
Society**  
with IBG

Advancing geography  
and geographical learning



Source: Sylwia Pecio (CC-BY-2.0)

# Wahiba Bedouin People

**Royal  
Geographical  
Society**  
with IBG

Advancing geography  
and geographical learning



Source: Mahmood Al-Yousif (CC-BY-2.0)



Source: Prasad Pillai (CC-BY-2.0)



# Life in Sharqiya

**Royal  
Geographical  
Society**

with IBG

Advancing geography  
and geographical learning

## Homework:

Read the letter from Hassan to an agony aunt.

What advice would you give him and how have you come to that decision?