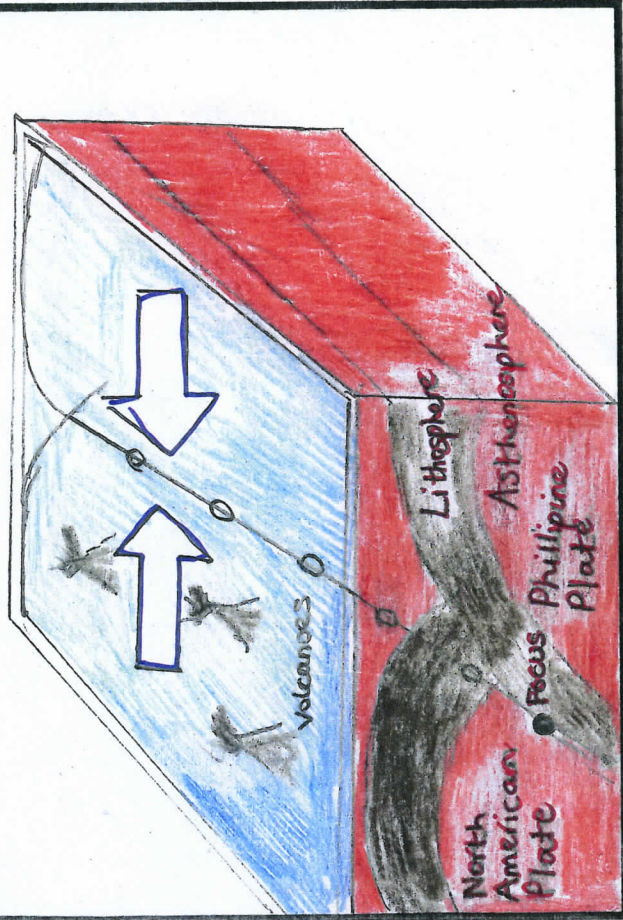
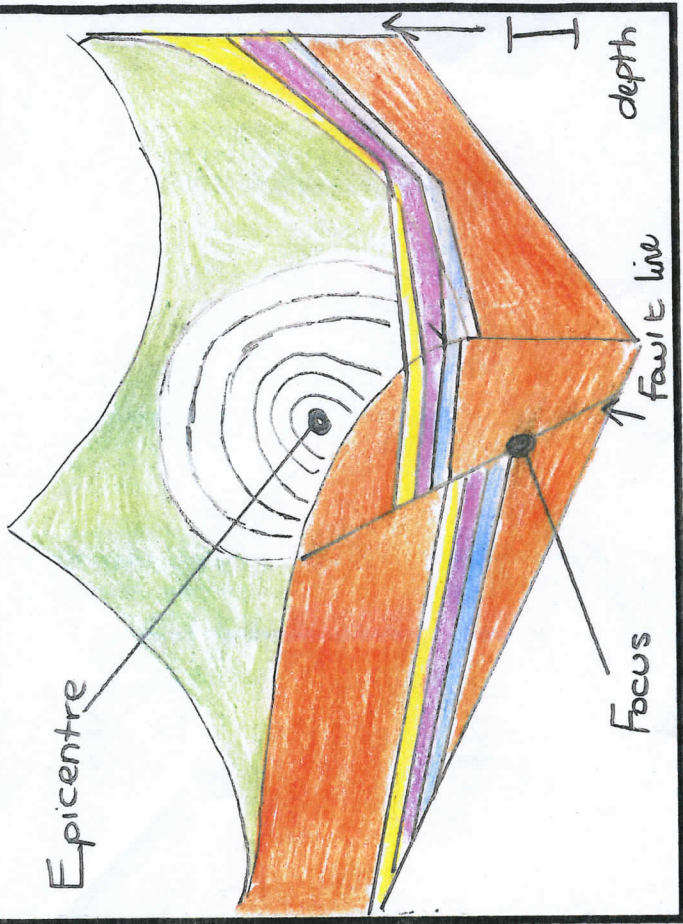


How the Japan Earthquake happened?



The Japan Earthquake occurred because of the friction and pressure between the two plates. As a result, the Philippine Plate was subducted under the North American Plate. This event occurred on the 11th March 2011 2:46pm. (Japan time)
The focus was 32km below sea level.

A cross section of an Earthquake 2

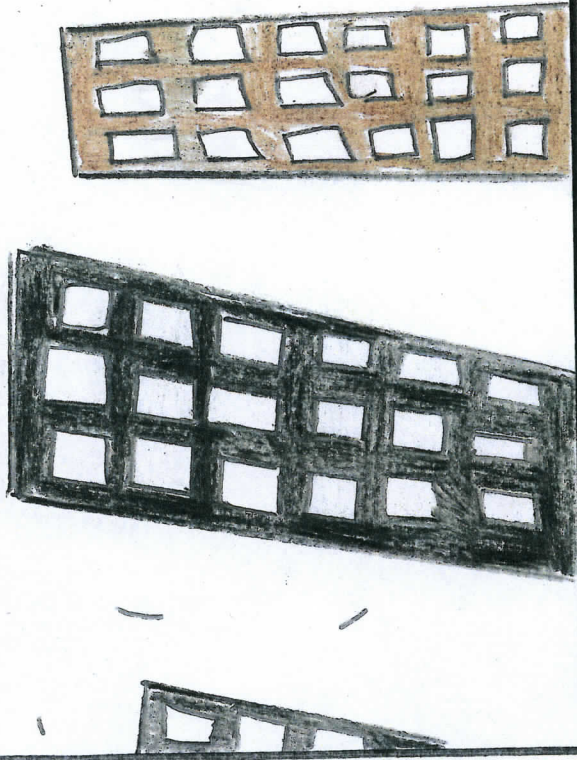


The focus is the point in which the earthquake begins. However, it is felt on the surface of the land also known as the Epicentre. Japan's Epicentre was 129km off the coast of Japan*. It has been recorded that Japan's coast has moved 4m to the east.

* to the east.

Wobbling buildings in Tokyo

↳ Wobbling buildings in Tokyo



The initial quake hit Sendai, however 303-28 km away Tokyo's buildings were recorded shaking. Luckily, the buildings were designed to shake so they don't fall. This is because they receive on average 1500 earthquakes per year. Since the main disaster 700 aftershocks have occurred contributing to the damage.

3



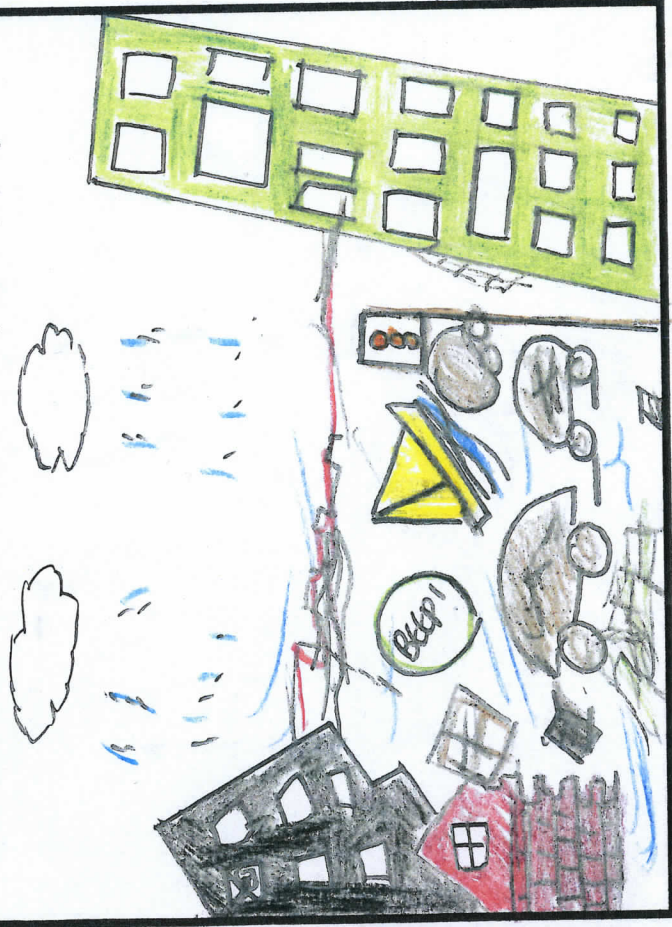
24 minutes after the earthquake is the beginning of the rain of 10 tsunamis occurred. The monster managed to destroy the 10m high wall encircling the whole of the Japanese coast. The last tsunami was 3 1/2 hours after the quake

As the shore became shallower it increased the height of the wave, allowing it to destroy homes, cars. It left 10,000 people dead, 20,000 missing and 1/4 of a million homeless so far. Did you know the tsunami wave came 10km in land.

4

Back to normal Japan???

5



Many residents are struggling to return to their normal lifestyles as they are surrounded by so much rubble. Unfortunately, people are still unable to even drink water as it is radio active. Even though it is estimated to ~~take~~ cost £125,000,000 we predict that the Japanese citizens will get hard working in no time.

to repair Japan

